



📍 14 Pockeridge Road, Corsham, Wiltshire, SN13 9SB

🏠 Price Guide £275,000

Immaculately presented throughout, this 3 bed semi detached property will make a lovely family home and is sold with no onward chain.

- 3 Bedroom Semi Detached Home
- Immaculately Presented Throughout
- Conservatory
- Gas Central Heating
- Double Glazed Throughout
- Off Road Parking For Up To 3 Cars
- Cul De Sac Location
- No Onward Chain

🏡 Freehold

📊 EPC Rating D



Immaculately presented throughout, this 3 bed semi detached property will make a lovely family home and is sold with no onward chain. Situated in a small cul de sac, the property has an entrance hallway with an understairs storage cupboard, tiled flooring, stairs to the first floor and doors to the living room and kitchen. The living room has a window to the front and double sized doorway which leads through to the attractive conservatory which has laminate effect vinyl flooring, French doors to the side leading to the garden and a built in floor cupboard with plumbing for a washing machine. The conservatory returns to the kitchen which is fitted with a range of shaker style wall and base units with granite work tops over and granite window cills and built in appliances which include an electric cooker, electric hob and extractor hood over, space for a dishwasher and built in waste and recycling bin in addition to space for a dish washer and fridge. The central heating boiler is tucked away in a wall cupboard and there is a window to the side. Off the first floor landing is a window to the front, loft access and doors to the bathroom and bedrooms. The immaculately presented bathroom has a modern white suite with shower cubicle and tiled flooring. The largest two bedrooms are located to the rear overlooking the spacious garden whilst the third single bedroom having a window to the side and over stairs storage cupboard. The property is double glazed throughout and warmed by a mains gas fired central heating system and all the remaining window cills are quartz. Externally the property has a large frontage laid to stone chippings which will accommodate between two to four cars depending on size and side access to the rear garden. The rear itself is laid mainly to a lawned area and patio. The garden is a very good size, private and enclosed by fencing with a raised area and with a good number of established bushes and shrubs.

Situation

Corsham is a pretty and historic town of architectural significance located on the southern fringes of the Cotswolds, an area of outstanding natural beauty and some 8 miles North East of the fine Georgian City of Bath. The town, noted for its fine High Street, has a wealth of beautiful and historic buildings dating from the 16th Century such as the Alms House and the historic Corsham Court with its landscaped open parkland. The town caters for most day to day needs with a range of national and bespoke shops, coffee houses, boutiques, restaurants and a variety of public houses. There are very good Primary and Secondary schools and the new Corsham Leisure Centre. Communications are excellent: Bath, Bristol and Swindon are all within easy motoring distance; there are fast road links to London and the West Country via the M4 motorway (J17 and 18 approximately 15 - 20 minutes away); and main line rail services are available from either Bath or Chippenham to Bristol Temple Meads and London Paddington.

Property information

Main Services

Gas Central Heating

Freehold Property

Council Tax Band: B

EPC Rating: D

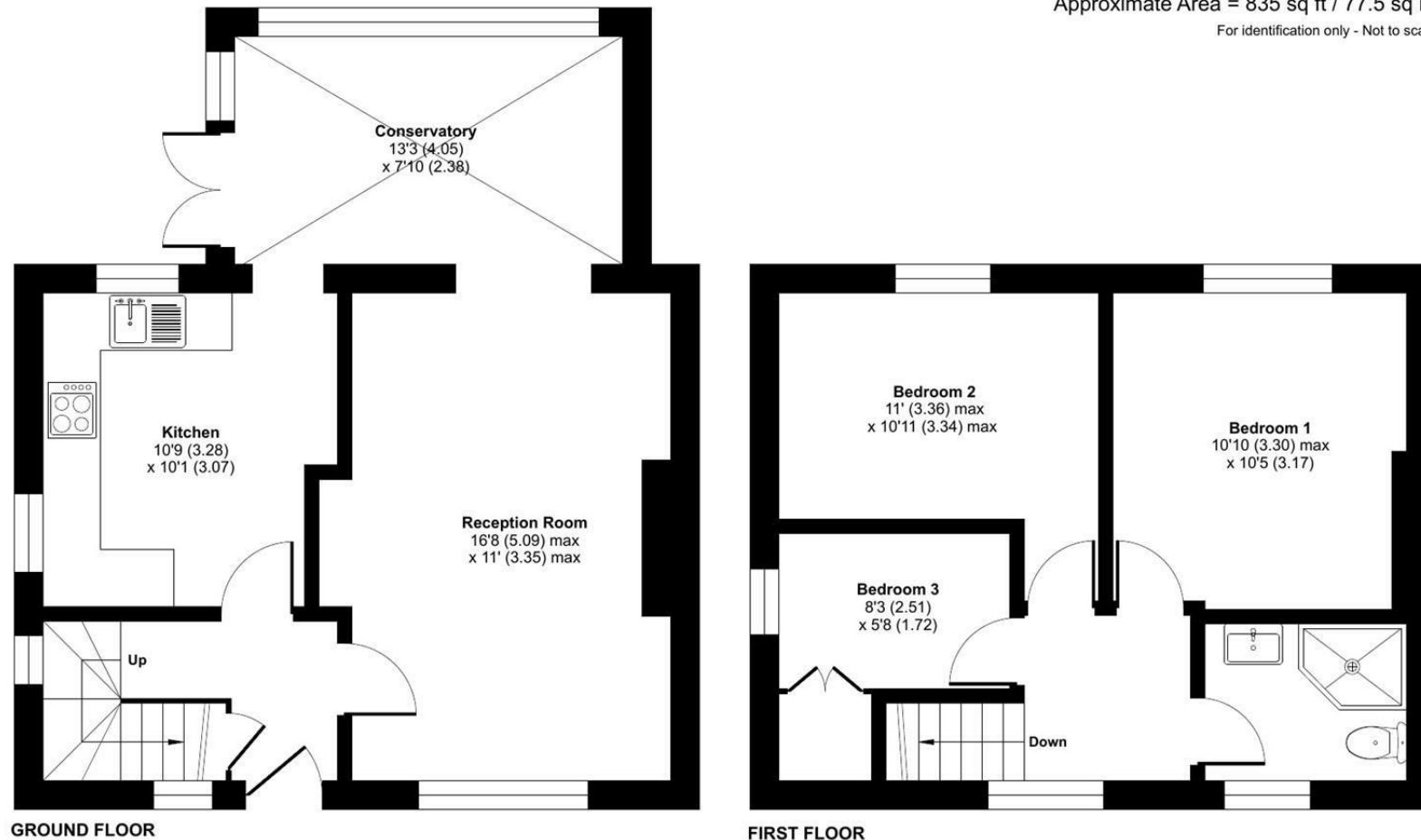
No Onward Chain



Pockeridge Road, Corsham, SN13

Approximate Area = 835 sq ft / 77.5 sq m

For identification only - Not to scale



 Floor plan produced in accordance with RICS Property Measurement 2nd Edition, Incorporating International Property Measurement Standards (IPMS2 Residential). © ntechcom 2026. Produced for Strakers. REF: 1419559

Disclaimer These particulars, whilst believed to be accurate are set out as a general outline only for guidance and do not constitute any part of an offer or contract. Intending purchasers should not rely on them as statements of representation of fact, but must satisfy themselves by inspection or otherwise as to their accuracy. No person in this firm's employment has the authority to make or give any representation or warranty in respect of the property. All measurements and distances are approximate only. Your home is at risk if you do not keep up repayments on a mortgage or other loan secured on it.